

S

SMART CONTROLLER



POULTRY SOLUTIONS EMPOWERED BY KNOWLEDGE

SMART CONTROLLER



LANDMECO's Smart Controller allows you to control and monitor all functions in your poultry house in an easy and well-structured way from one centrally located control unit.

The Smart Controller is so user friendly and easy to work with that you can operate the control system independently after spending just a short period of time learning about the system. Refer also to the demonstration video on www.landmecc.com, in which all functions are reviewed in just 4 minutes.

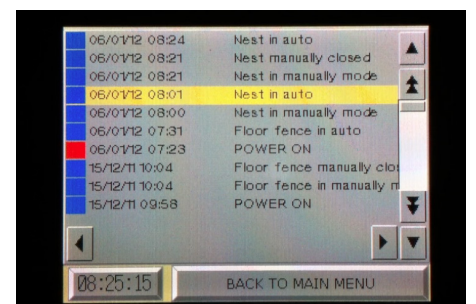
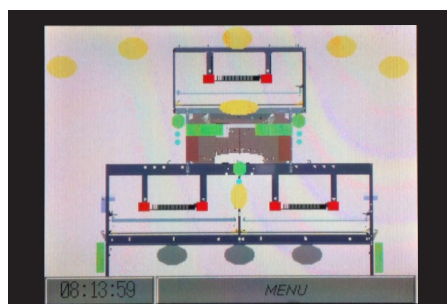
The Smart Controller has been developed and is produced by LANDMECO.

The Smart Controller can be used both with the Combo and the Xtra aviary system.

START-UP

All functions are controlled from the Smart Controller menu. Before start up, the date and time is set and the language is selected, either Danish or English.

The Smart Controller also has a log function. The log function registers all commands and changes made in the Smart Controller. You can therefore always use the log function to see what you have done and what settings you have used previously.



CONTROL OPPORTUNITIES

LIGHTING

1

All lights in the house, whether mounted on walls, ceilings, floors or tiers, can be controlled from here. You can control the switching on/off and the lowering/increasing of lighting strength.



FEED

2

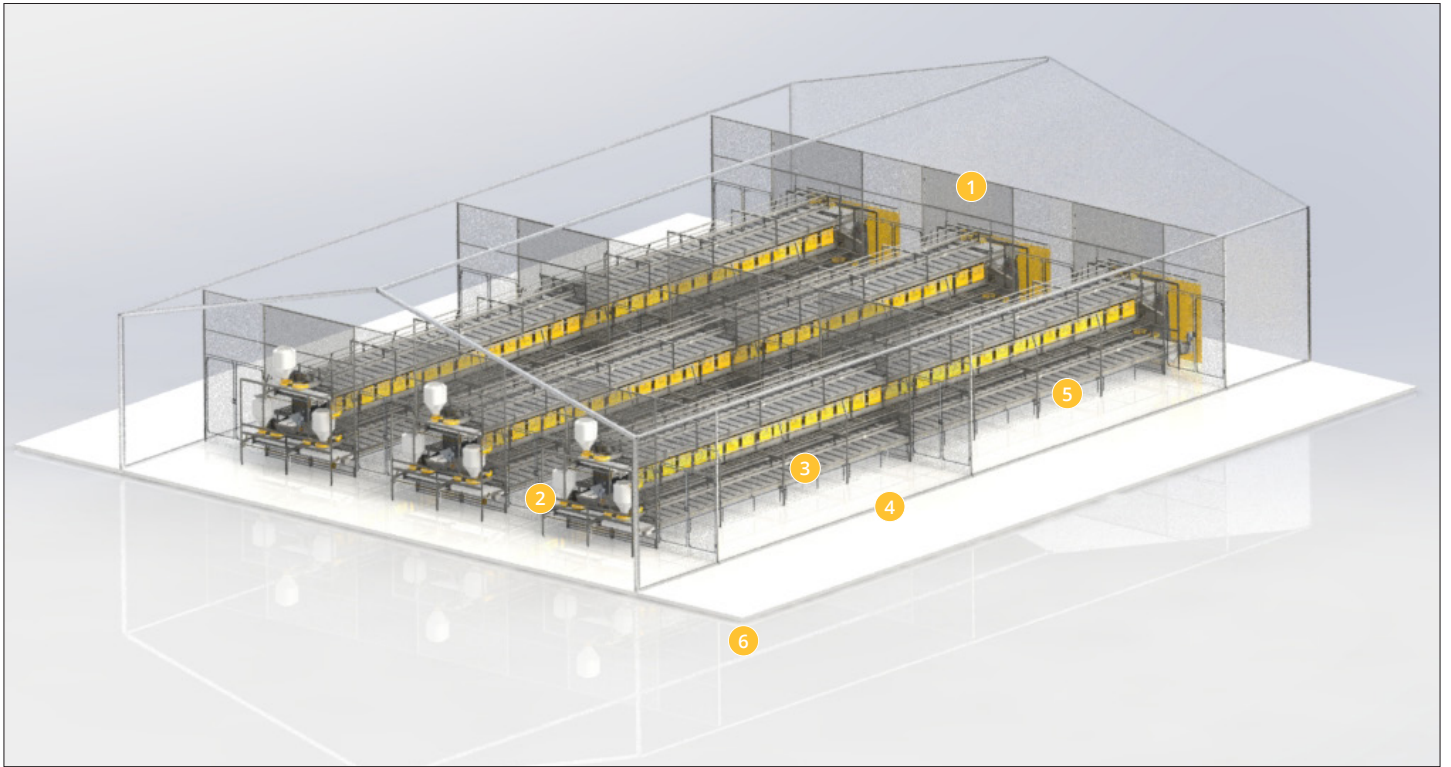
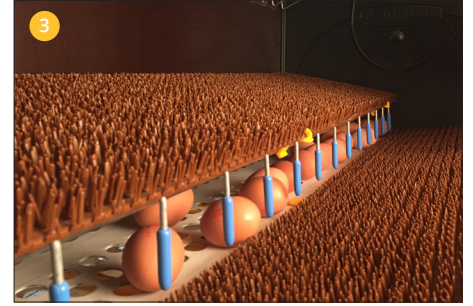
The quantity, duration and timing of individual feedings can be controlled. This can be set for each tier.



NEST

3

The unit can control the opening and closing of nests. Opening and closing can be carried out automatically, using a timer or manually.

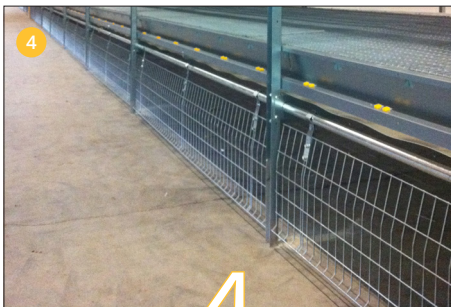


4

WIRE GUARD

4

The opening and closing of wire guards can be controlled from here. Opening and closing can be carried out automatically, using a timer or manually.



5

WATER

5

You can turn water on/off using a timer or manually. You can also monitor water consumption for each day of the week.

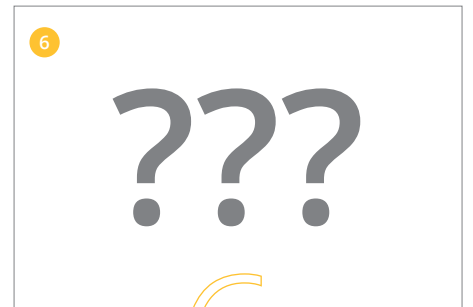


6

OPTIONAL

6

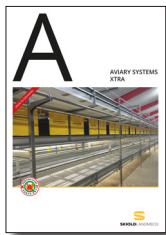
Two additional units can be controlled via the Smart Controller. This could for instance be the opening of exit openings for free range and ecologically farmed hens.



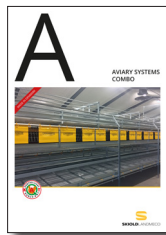
TECHNICAL SPECIFICATIONS

Product type:	Smart Controller
Item no.:	5810-1000
Colour screen:	5,7" Touch Screen
Conectors:	
10 outputs for nest control	
8 outputs for wire guards	
2 outputs for passive control of fluorescent tubes (max. 200)	
4 outputs for active control of LED lights	
2 outputs, potential free, programmable for example for alarms, ventilation etc.	

See also LANDMECO brochures on, for example:
(LANDMECO retains the right to alter specifications without notice)



AVIARY SYSTEMS
XTRA



AVIARY SYSTEMS
COMBO

DEALER