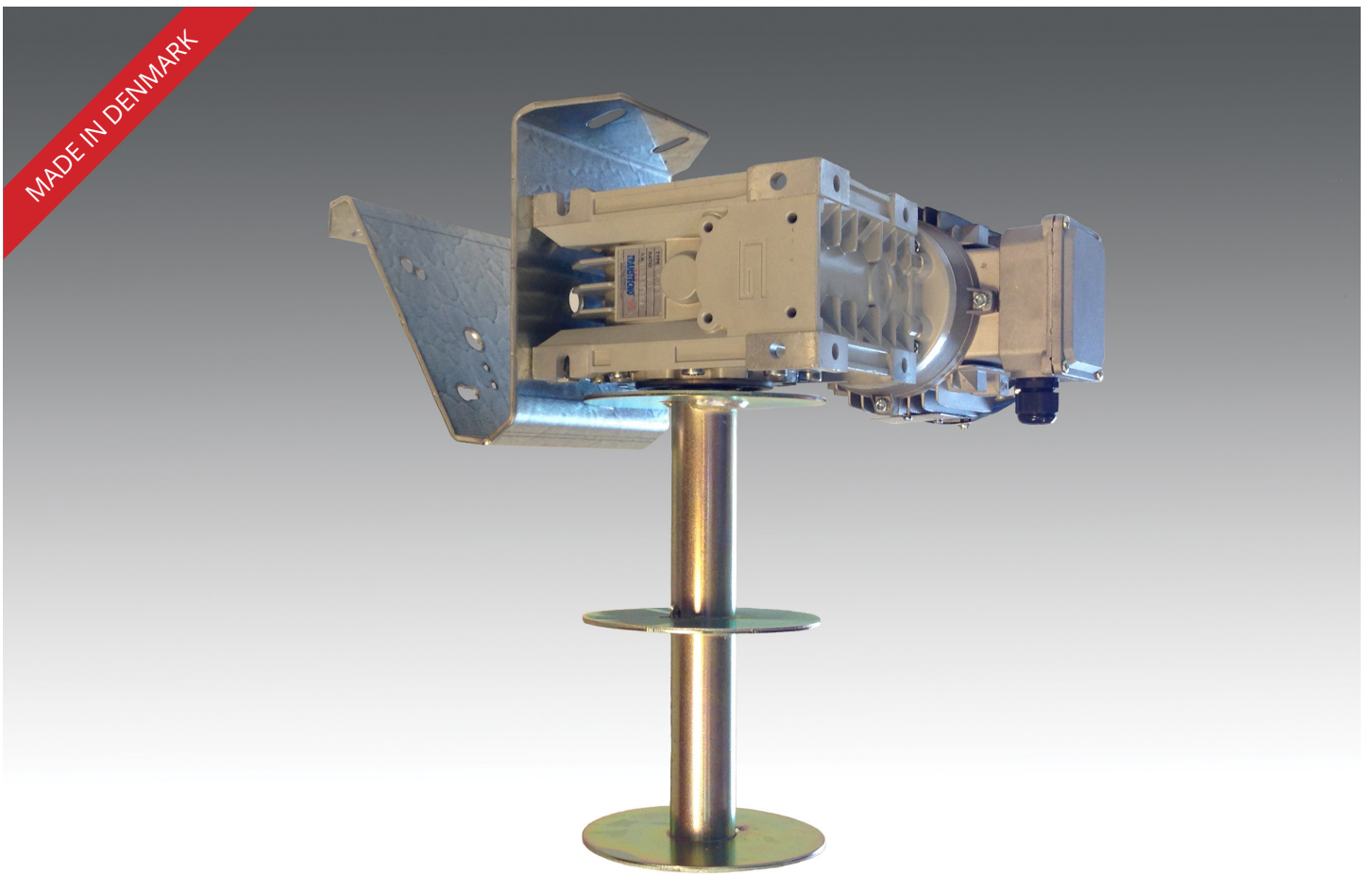


H

HOIST SYSTEMS



POULTRY SOLUTIONS EMPOWERED BY KNOWLEDGE

HOIST SYSTEMS



Reliability through experience

The broad range of equipment for all types of hoisting operations has been compiled and developed based on many years' experiences. LANDMECO can therefore find an optimal solution for even the most complex constructions and systems. Furthermore, LANDMECO is a total supplier of all necessary equipment.

This brochure provides examples of hoist systems available from LANDMECO.

CHOOSING A SYSTEM

10

Factors to be considered when choosing and dimensioning a system:

1. The components to be raised/lowered
2. The frequency with which they are to be raised/lowered
3. Component weight
4. Building design
5. Clearance requirements
6. Other installations
7. Expected service life
8. The environment to be endured
9. Other factors that burden the hoist system extraordinarily
10. Reliability

HOISTING SYSTEM CONTROL

LANDMECO has developed central controls for hoisting feeding and drinking systems. After the house has been stocked with chickens, the individual hoisting systems must first be adjusted manually. After that, they can be controlled simultaneously with a single button.

The drinking system is lifted by the drum directly, while the feeding system usually is fitted with gearing and is lifted at half speed. Using the central controls, for every 1 cm (0.3937 inch) the drinking system is raised, for example, the feeding system will thus only be raised ½ cm. (0.1968 inch).

Example:

For a housing unit with four feeding lines and five drinking lines, the controls will have nine buttons: one for each hoist motor. These buttons should be used when manually adjusting the height of each individual system.

In addition, there will be the button which activates the central control of all nine hoist motors, allowing all feeding/drinking lines to be raised/lowered simultaneously.



HOIST SYSTEM ACCESSORIES

Three types of suspension cable

The cable on which the feeding or drinking system is suspended can be steel wire, polyester rope or braided cord.

The type chosen should always be the one which best meets the requirements in the particular situation.

Stainless or galvanized wire rope

Wire rope is available in stainless or galvanized versions.

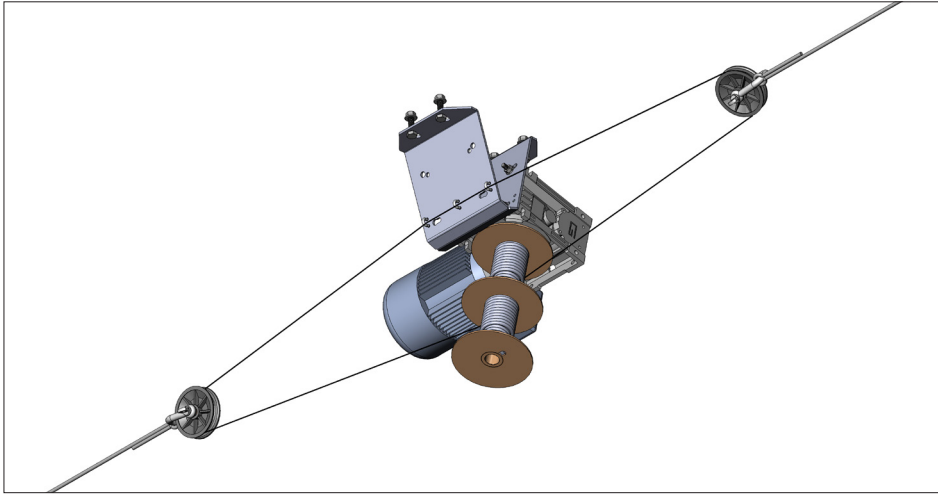
As there is a large difference in price between the two types, the choice of material should be based on expected service life and the environment in which the system is to be used.

Control cabinets

Control cabinets containing all the equipment necessary for hoist operation are available for all LANDMECO hoist systems.

This allows individual hoists to be activated separately, or several or all hoists to be activated simultaneously.

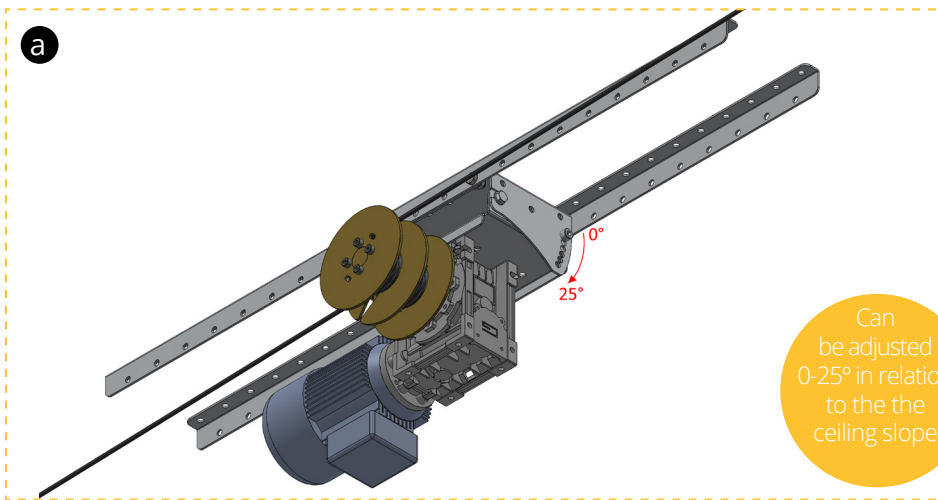
SINGLE HOIST



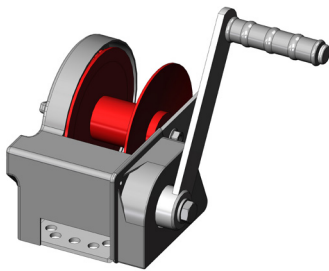
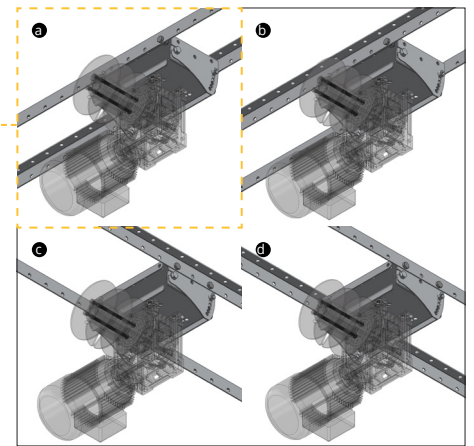
LANDMECO offers special fittings that can be adapted for all kinds of rafters and ceilings, thus ensuring that installation costs are kept at a minimum.

Large flexibility is especially shown by LANDMECO's bracket that can be adjusted in relation to the ceiling slope (see Figure a, b, c and d).

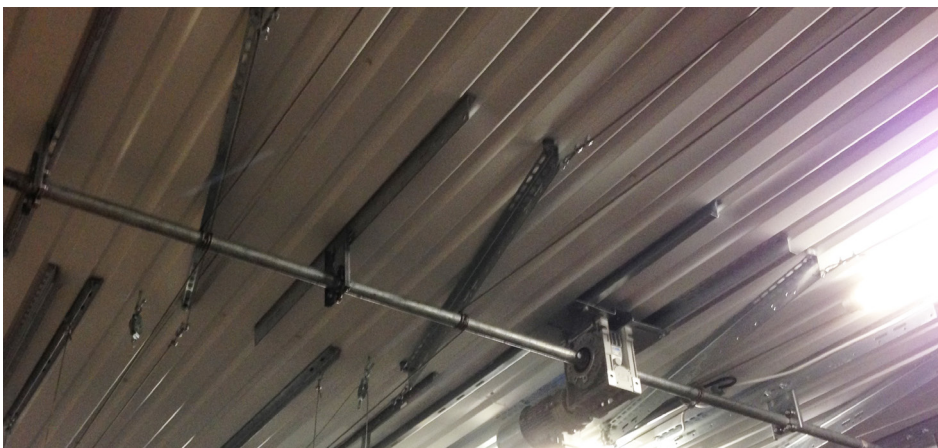
Single hoists can be installed either directly or with gearing if greater lifting capacity and safety are required. Various types of single hoist are available - electrically driven, with manual worm gear, and hand winched with cog gear and brake.



Can be adjusted 0-25° in relation to the ceiling slope



CENTRAL HOIST



The powerful LANDMECO central hoist is recommended for houses with flat ceilings or houses in which several lines must be lifted simultaneously.

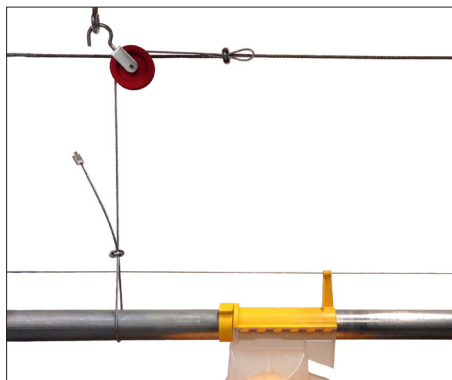
This system ensures exceptionally stable operation and electrical wiring costs are minimized. If gearing is used, lifting speed and the load exerted on the hoisting gear are reduced, thus ensuring the stability and safety of hoisting operations in large houses.

Ideally, all hoist types should be located in the center of the house.

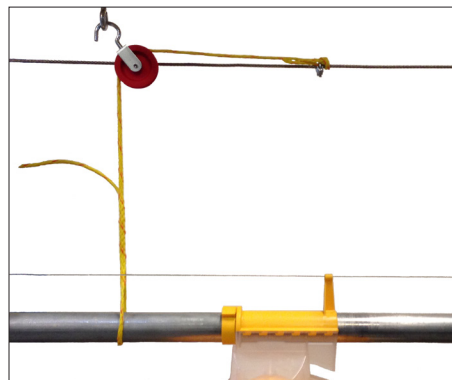
TECHNICAL SPECIFICATIONS

Worm-gear motor for single hoist	0.55 kW, 1400/17.5 rpm 0,55 kW, 1400/14.0 rpm 1,10 kW, 1400/14.0 rpm
Worm-gear motor for central hoist	1.5 kW, 1400/17.5 rpm
Manual hoist	350 kg, 550 kg, 750 kg and 950 kg. (771.62-1212.54-1653.47-2094.39 lb. All with brake.
Worm gearing	Manual with double drum
Pulleys	Pulley with 50 mm (1.9685 inch) dia. nylon sheave and two eyes
Pulley with 60 mm (2.3622 inch) dia. nylon sheave and two eyes	Pulley with 60 mm dia. nylon sheave and two eyes
Pulley with 90 mm (3.5433 inch) dia. plastic sheave and shackle	Pulley with 90 mm dia. plastic sheave and shackle
Polyester rope	4 mm (0.1575 inch)
Braided cord	6 mm (0.2362 inch)
Wire rope	Galvanised wire ropes: 3, 4 and 5 mm (0.1181-0.1575-0.1968 inch)
ACC 7 x 19, breaking strength: 180 kg/mm ² (396.8321 lb/17 gauge)?	ACC 7 x 19, breaking strength: 180 kg/mm ²
Stainless wire ropes: 3, 4 or 5 mm (0.1181-0.1575-0.1968 inch)	Stainless wire ropes: 3, 4 or 5 mm
ACC 7 x 19, breaking strength: 160 kg/mm ² (352.7396 lb/17 gauge)?	ACC 7 x 19, breaking strength: 160 kg/mm ²
Controls	Controls are available for specific tasks

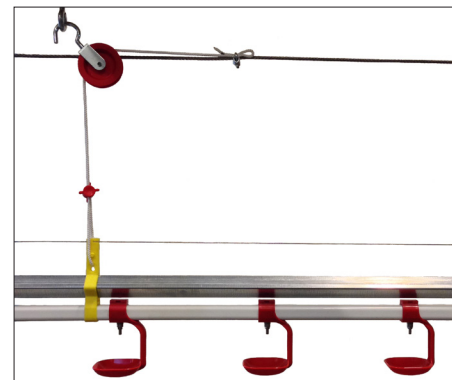
Suspension Cable: Steel Wire



Suspension Cable: Braided Cord



Suspension Cable: Polyester Rope



See also LANDMECO brochures on, for example:
(LANDMECO retains the right to alter specifications without notice)



PAN FEEDING
KICK-OFF 330°



DRINKING SYSTEMS



HEATING SYSTEMS



BREEDER FEEDING

DEALER